



Child protection and foster care: The impact of institutions, funding, and implementation

23.01.2023

Michael Marti



Universität
Zürich ^{UZH}

ECOPLAN / IPZ

Research questions

For the years 1970 to 2018:

- How can the out-of-home placement policies at national and cantonal level be characterised and how did they evolve?
 - What were the legal provisions and what institutional arrangements and financial mechanisms were used to implement them?
- What incentives did they create and what influence did these incentives have on out-of-home placement practices?
 - How do the structures affect the number of out-of-home placements?
- What institutional arrangements and financial mechanisms lead to placement practices that ensure the well-being of the child?

Data / methodology

Investigation level

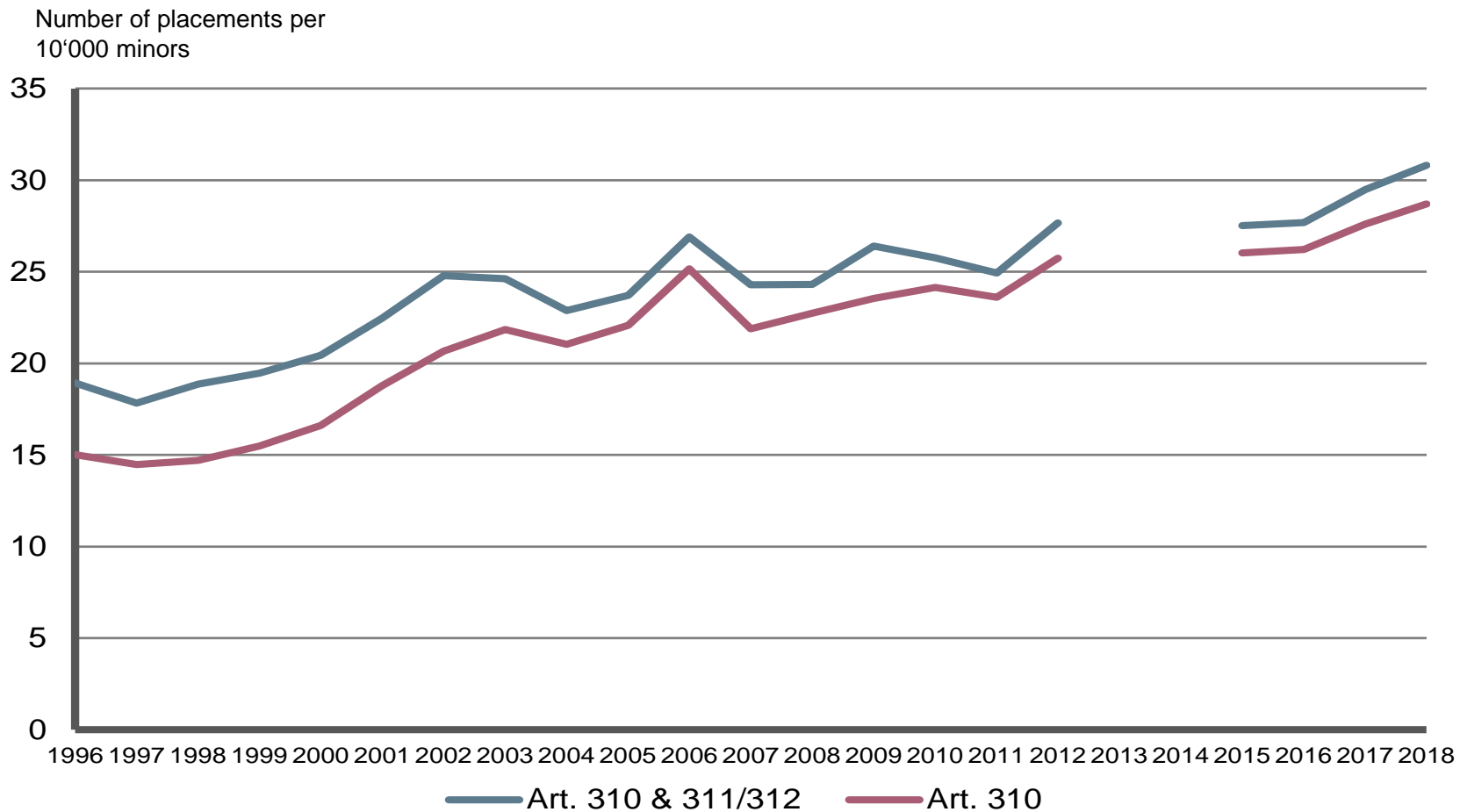
- Laws & ordinances at cantonal level
- Legal **requirements**, not implementation of policies
 - Implementation not recorded
 - Municipal decrees not recorded

Methods

- Cluster analyses
- Panel data analyses

Number of placements

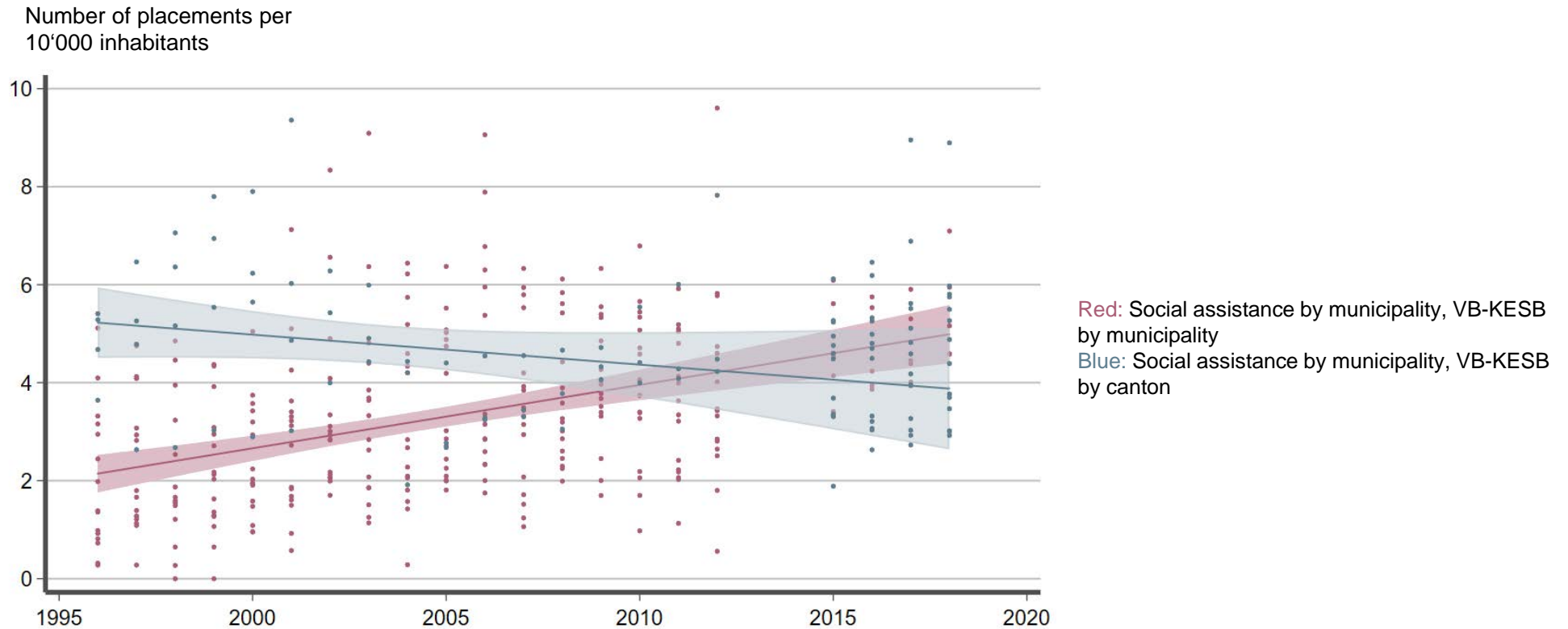
KOKES statistics: Art. 310, 311/312



Relationships: responsibility

Question: What is the relationship between the number of placements ordered and the level of responsibility for social assistance and guardianship measures?

Descriptive analysis



Relationships : responsibility

Question: What is the relationship between the number of placements ordered and the level of responsibility for social assistance and guardianship measures?

Panel data analysis

Social assistance \ VB-KESB	Municipality	Canton	Tribunal
Municipality	Base	+	+
Canton	Base	=	-

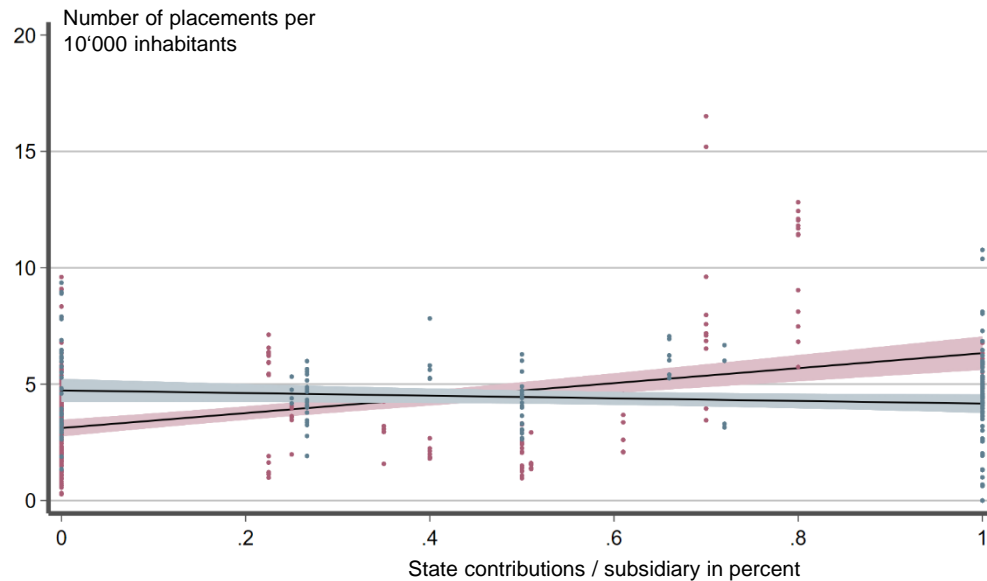
+ more placements; - fewer placements; = unchanged

- There is a correlation between the number of placements ordered and the responsibility for guardianship measures and social assistance.
- If the responsibility for guardianship measures and social assistance is at the same level, fewer placements are made.

Relationships: Cantonal funding

Question: What is the relationship between the number of placements and the (legal requirements for) cantonal contributions to social assistance / subsidiary financing?

Descriptive analysis



- No relationship found.

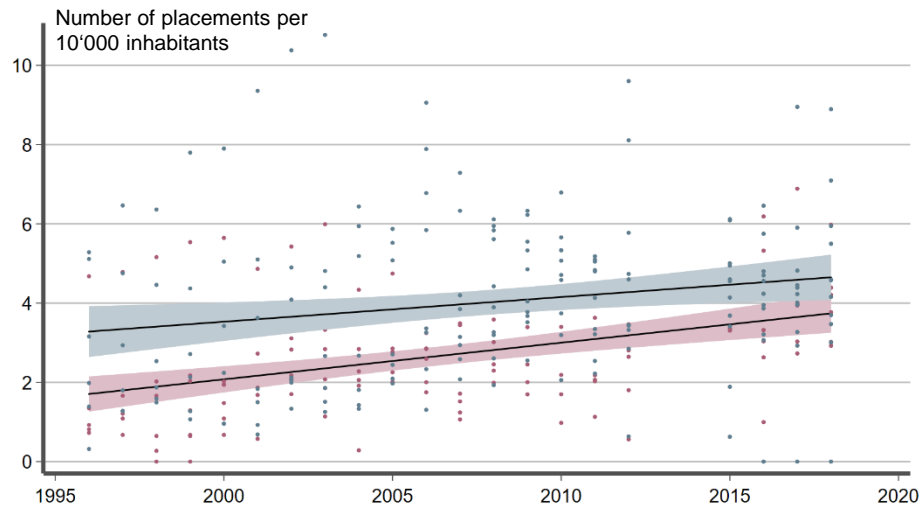
Panel data analysis

VB-KESB	State contributions / subsidiary
Municipality	=
Canton	=
Tribunal	=

Relationships: Cantonal funding

Question: What is the relationship between the number of placements and the (legal requirements for) cantonal operating contributions to children's and young people's homes?

Descriptive analysis



Red: no requirements

Blue: Can/must requirements, depending on # children

Panel data analysis

	Can/must requirement Operating contributions		
VB-KESB	No	yes, regardless of # children	yes, depending on # children
Municipality	Base	+	+
Canton	Base	=	=
Tribunal	Base	---	---

- There is a relationship if the municipalities are responsible for the guardianship measures.

Challenges

There seems to be a correlation between the funding system and the number of placements.

- Despite standardisation through the “KESR”, there are still differences between the cantonal systems, especially with regard to the funding systems.
- The influence of funding systems also potentially competes with the best interests of the child.
- This challenge primarily concerns the cantons and communes, but also the professionals responsible for placements.

Challenges

There seems to be a correlation between the funding system and the number of placements.

- Adapt funding systems so that the decision-making authority is confronted with as few financial restrictions as possible.
- Alternative: Further sensitize professionals or adapt internal organisation so that financial aspects play as little role as possible for the decision-makers.
- Further research is needed to better understand the interrelationships.